

## Supplementary File

**Table S1. Clinical characteristics of the affected nails among different study groups at baseline evaluation.**

Characteristic	Terbinafine, N = 40 <sup>1</sup>	PRP, N = 51 <sup>1</sup>	PRP+Terbinafine, N = 50 <sup>1</sup>	Overall, N = 141 <sup>1</sup>	p-value <sup>2</sup>
<b>Clinical type</b>					0.2
DLSO	11 (28%)	14 (27%)	11 (22%)	36 (26%)	
LO	20 (50%)	18 (35%)	17 (34%)	55 (39%)	
Mixed	8 (20%)	16 (31%)	22 (44%)	46 (33%)	
PSO	0 (0%)	2 (3.9%)	0 (0%)	2 (1.4%)	
TD	1 (2.5%)	1 (2.0%)	0 (0%)	2 (1.4%)	
<b>Baseline OSI score</b>	8 (4, 17)	15 (8, 24)	9 (4, 15)	12 (6, 20)	<b>0.004</b>
<b>Nail</b>					>0.9
Rt middle	7 (18%)	11 (22%)	10 (20%)	28 (20%)	
Rt index	8 (20%)	8 (16%)	7 (14%)	23 (16%)	
Rt thumb	6 (15%)	7 (14%)	9 (18%)	22 (16%)	
Rt ring	6 (15%)	6 (12%)	4 (8.0%)	16 (11%)	
Rt little	1 (2.5%)	3 (5.9%)	3 (6.0%)	7 (5.0%)	
Lt middle	4 (10%)	5 (9.8%)	4 (8.0%)	13 (9.2%)	
Lt thumb	2 (5.0%)	4 (7.8%)	5 (10%)	11 (7.8%)	
Lt index	2 (5.0%)	4 (7.8%)	4 (8.0%)	10 (7.1%)	
Lt ring	3 (7.5%)	3 (5.9%)	2 (4.0%)	8 (5.7%)	
Lt little	1 (2.5%)	0 (0%)	2 (4.0%)	3 (2.1%)	

<sup>1</sup>Median (IQR); n (%)

<sup>2</sup>Kruskal-Wallis rank sum test; Fisher's exact test; Pearson's chi-square test

\*DLSO: distal and lateral subungual onychomycosis; LO: lateral onychomycosis; PSO: proximal subungual onychomycosis; TD: total dystrophic

Table S2. Paronychia per affected nail among different study groups (two-investigator assessment).

Characteristic	Terbinafine, N=40 <sup>1</sup>	PRP, N=51 <sup>1</sup>	PRP+Terbinafine, N=50 <sup>1</sup>	p-value <sup>2</sup> (groups)	P-value baseline vs. after treatment <sup>3</sup>	p-value baseline vs. follow-up <sup>3</sup>	p-value after treatment vs. follow-up <sup>3</sup>	Agreement <sup>4</sup>
Paronychia before treatment (Investigator A)	31 (78%)	35 (69%)	40 (80%)	0.4	T= 0.28 PRP=0.6 T+PRP=0.9	T= 0.28 PRP=0.13 T+PRP=0.53	T= 1 PRP=0.6 T+PRP=0.9	0.89
Paronychia before treatment (Investigator B)	32 (80%)	37 (73%)	40 (80%)	0.6				
Paronychia after treatment (Investigator A)	23 (58%)	29 (57%)	36 (72%)	0.2				0.9
Paronychia after treatment (Investigator B)	31 (78%)	33 (65%)	38 (76%)	0.3				
Paronychia on follow-up (Investigator A)	23 (58%)	24 (47%)	33 (66%)	0.2				0.93
Paronychia on follow-up (Investigator B)	26 (65%)	25 (49%)	34 (68%)	0.12				

<sup>1</sup> n (%); <sup>2</sup> Pearson's chi-square test; <sup>3</sup> Bonferroni-corrected p-value; <sup>4</sup> Weighted Kappa correlation.

\* PRP: platelet-rich plasma; T: terbinafine.

Table S3. Dermoscopic findings per affected nail among different study groups.

Characteristic	Terbinafine, N=40 <sup>1</sup>	PRP, N=51 <sup>1</sup>	PRP+Terbinafine, N=50 <sup>1</sup>	p-value (groups) <sup>2</sup>	p-value baseline vs. after treatment <sup>3</sup>	p-value baseline vs. follow-up <sup>3</sup>	p-value after treatment vs. follow-up <sup>3</sup>
Subungual hyperkeratosis					T=0.65, PRP=0.4, T+PRP=0.4	T=0.65, PRP=0.045, T+PRP=0.3	T=1, PRP=0.4, T+PRP=0.8
Subungual hyperkeratosis before treatment	25 (63%)	21 (41%)	24 (48%)	0.12			
Subungual hyperkeratosis after treatment	22 (55%)	14 (27%)	17 (34%)	0.022			
Subungual hyperkeratosis on follow-up	22 (55%)	9 (18%)	15 (30%)	<0.001			
<b>Longitudinal striations</b>					T=1, PRP=0.41, T+PRP=1	T=1, PRP=0.2, T+PRP=1	T=1, PRP=1, T+PRP=1
Longitudinal striations before treatment	8 (20%)	5 (9.8%)	4 (8%)	0.2			
Longitudinal striations after treatment	8 (20%)	1 (2.0%)	3 (6%)	0.011			
Longitudinal striations on follow-up	7 (18%)	0 (0%)	1 (2%)	<0.001			
<b>Onycholysis</b>					T=1, PRP=0.14, T+PRP=0.9	T=0.36, PRP=0.01, T+PRP=0.9	T=49, PRP=0.4, T+PRP=1
Onycholysis before treatment	18 (45%)	26 (51%)	12 (24%)	0.016			
Onycholysis after treatment	17 (43%)	16 (31%)	7 (14%)	0.010			
Onycholysis on follow-up	13 (33%)	11 (22%)	7 (14%)	0.11			

Table S3 continues

Table S3. Dermoscopic findings per affected nail among different study groups. (Continued)

Characteristic	Terbinafine, N=40 <sup>1</sup>	PRP, N=51 <sup>1</sup>	PRP+Terbinafine, N=50 <sup>1</sup>	p-value (groups) <sup>2</sup>	p-value baseline vs. after treatment <sup>3</sup>	p-value baseline vs. follow-up <sup>3</sup>	p-value after treatment vs. follow-up <sup>3</sup>
<b>Chromonychia</b>							
Chromonychia before treatment	35 (88%)	47 (92%)	45 (90%)	0.7			
Chromonychia after treatment	30 (75%)	39 (76%)	41 (82%)	0.7			
Chromonychia on follow-up	29 (73%)	38 (75%)	38 (76%)	>0.9	T=0.5, RRP=0.1, T+PRP=0.8	T=0.49, PRP=0.1, T+PRP=0.3	T=1, PRP=1, T+PRP=0.8
<b>Dermatophytoma</b>							
Dermatophytoma before treatment	0 (0%)	6 (12%)	0 (0%)	0.004			
Dermatophytoma after treatment	0 (0%)	3 (5.9%)	0 (0%)	0.11			
Dermatophytoma on follow-up	0 (0%)	0 (0%)	0 (0%)		PRP=0.5	PRP=0.1	PRP=0.5

<sup>1</sup> N (%); Median (IQR)

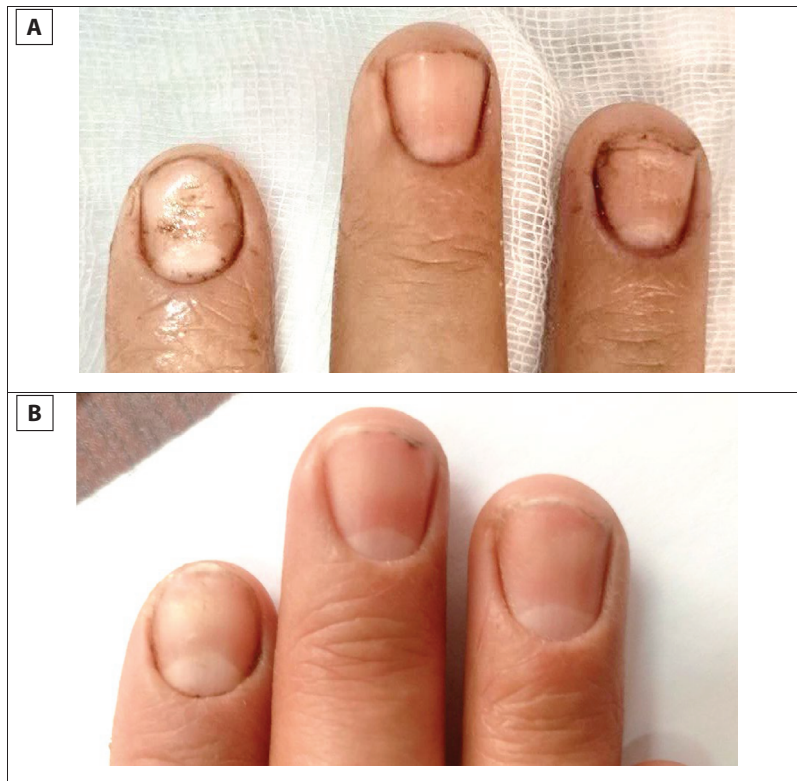
<sup>2</sup> Fisher's exact test; Kruskal-Wallis rank sum test; Pearson's chi-square test

<sup>3</sup> Bonferroni adjusted p-value; T: terbinafine.

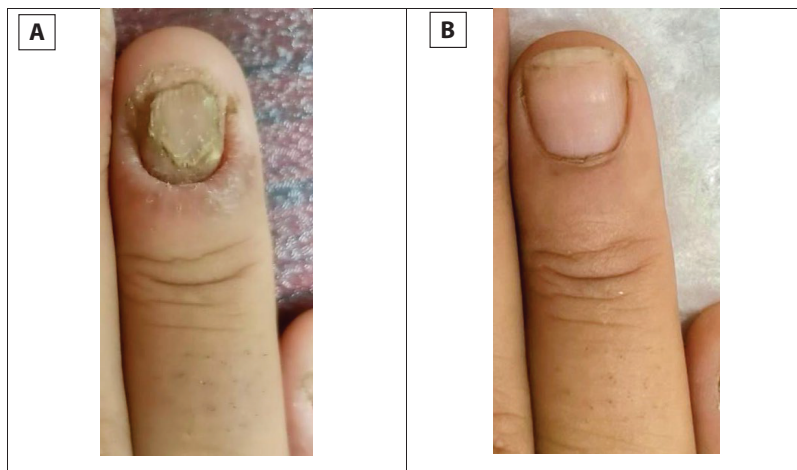
Table S4. KOH and culture findings per affected nail among different study groups.

Characteristic	Terbinafine, N = 40 <sup>1</sup>	PRP, N = 51 <sup>1</sup>	PRP+Terbinafine, N = 50 <sup>1</sup>	p-value <sup>2</sup> (groups)	p-value before vs. after treatment <sup>3</sup>	p-value before vs. follow-up <sup>3</sup>	p-value after treatment vs. follow-up <sup>3</sup>
<b>KOH</b>							
Positive KOH before treatment	37 (93%)	40 (78%)	41 (82%)	0.2	T=0.002, PRP=0.04, T+PRP=0.02	T<0.001, PRP<0.001, PRP+T<0.001	T=0.65, PRP=0.17, T+PRP=0.7
Positive KOH after treatment	23 (58%)	28 (55%)	27 (54%)	>0.9			
Positive KOH on follow-up	20 (50%)	20 (39%)	17 (34%)	0.3			
<b>Culture</b>							
Culture before treatment (all positive)				0.2			T=0.03, PRP<0.001, T+PRP<0.001
<i>Candida albicans</i>	20 (50%)	30 (59%)	37 (74%)				
<i>Aspergillus flavus</i>	8 (20%)	13 (25%)	5 (10%)				
<i>Mucormycosis</i>	9 (23%)	6 (12%)	5 (10%)				
<i>Trichophyton rubrum</i>	2 (5.0%)	0 (0%)	3 (6.0%)				
<i>Epidermophyton</i>	0 (0%)	2 (3.9%)	0 (0%)				
<i>Microsporum canis</i>	1 (2.5%)	0 (0%)	0 (0%)				
Positive culture after treatment	32 (80%)	36 (71%)	36 (72%)	0.6			
Positive culture on follow-up	32 (80%)	33 (65%)	33 (66%)	0.2			

<sup>1</sup>N (%); <sup>2</sup> Pearson's chi-square test or Fisher's exact test; <sup>3</sup> Bonferroni adjusted p-value  
\* PRP: platelet-rich plasma; T: terbinafine.



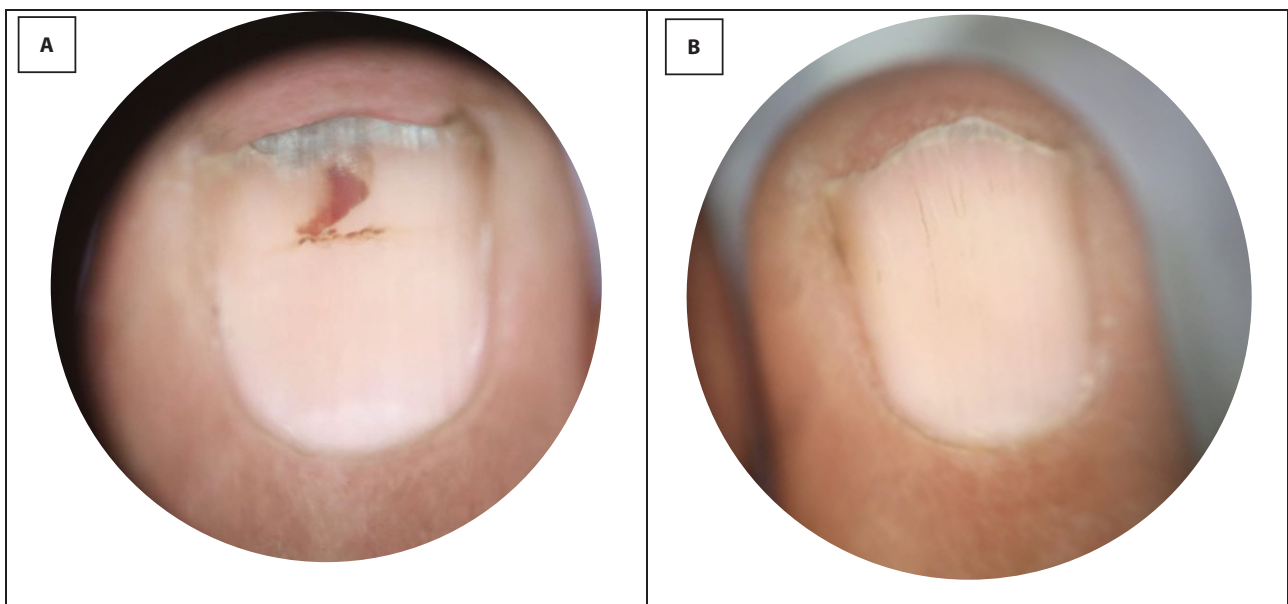
**Figure S1.** Clinical photos of a 25-year-old female patient's right index and ring fingernails in the terbinafine group: (A) before treatment (OSI=6 & 3); (B) after 3-month follow-up (OSI= 0 & 0).



**Figure S2.** Clinical photos of a 35-year-old female patient's right ring fingernail in the PRP group: (A) before treatment (OSI=25) with marked paronychia; (B) after 3-months follow-up (OSI=0) with the resolution of paronychia.



**Figure S3.** Clinical photos of a 32-year-old female patient's left middle fingernail in the PRP + terbinafine group: (A) before treatment (OSI=25) with severe paronychia; (B) after 3-month follow-up (OSI=0) with resolution of paronychia.



**Figure S4.** Dermoscopic photos showing (A) subungual hematoma after PRP injection, (B) complete resolution with nail growth after one month.